

# DENOX



## 302/10 Refractory Court Holroyd NSW

3 2 2

Positioned within a well-maintained complex, this exceptionally spacious apartment boasts a rare 134sqm of internal living, thoughtfully designed to offer comfort, privacy, and effortless modern living. Constructed with solid double brick, the home provides excellent durability, insulation, and quiet living. Showcasing expansive proportions, multiple living zones, and a generous balcony ideal for entertaining, this residence delivers a true house-sized feel in an apartment setting. Perfectly suited for families or peoples who seek for substantial space and lifestyle convenience in the heart of Holroyd, one of the area's most connected and fast-growing locations.

### Features

- Expansive open-plan living and dining area (approx. 4.1m)

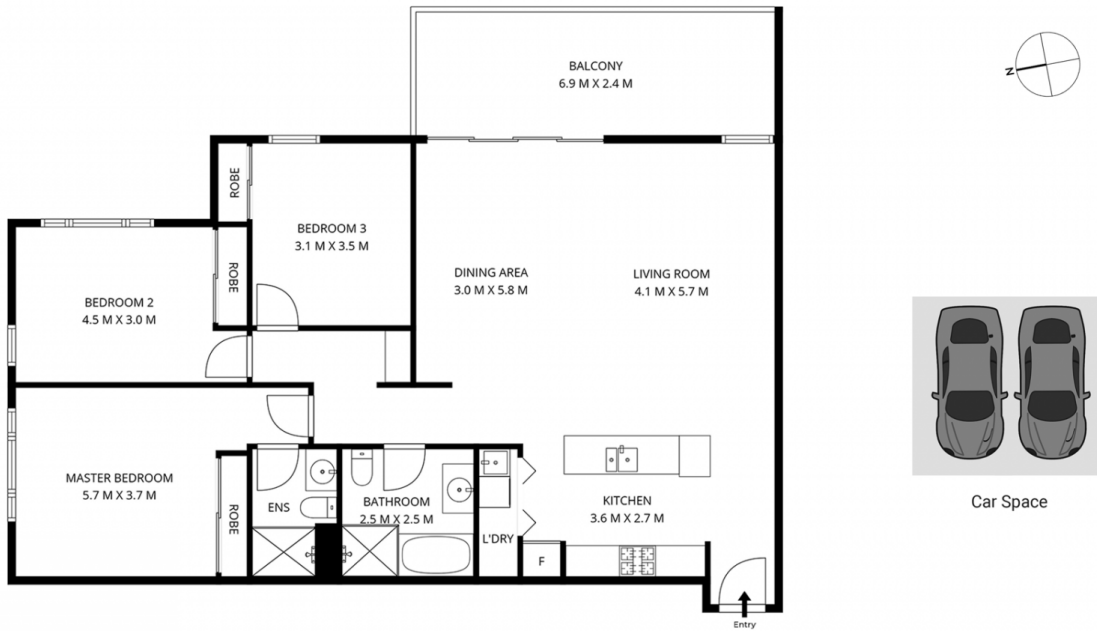
**Type** : Apartment  
**Price** : \$880  
**Building Size** : 169 sqm  
**View** : <https://www.denox.com.au/8698585>



**Kwan Logan Lui**  
02 9267 9071

[For full version visit the website](https://www.denox.com.au)

<https://www.denox.com.au>



## 302/10 Refractory Ct, Holroyd

LIVING AREA: 134 SQM APPROX  
CAR SPACE AREA: 35 SQM APPROX  
TOTAL AREA: 169 SQM APPROX

INDICATIVE ONLY. THIS INFORMATION PRESENTED HERE IS SOURCED FROM WHAT WE CONSIDER RELIABLE SOURCES, WE CANNOT ASSURE ITS PRECISION. THOSE WITH INTEREST SHOULD CONDUCT THEIR OWN INVESTIGATIONS.