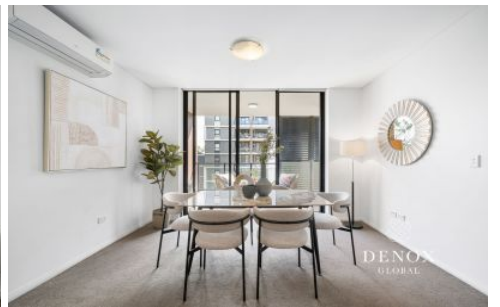


# DENOX



3055/2D Porter Street Ryde NSW

1  1  1 

Daniel and Joseph are proud to present this rare offering of an oversized 1 bed + study in the sought-after Crowle Estate complex at Ryde. Perched up on level 3 with a peaceful garden view, you will enjoy tranquil living with a sunny northwestern aspect. This apartment is great for living and entertaining, featuring a generous undercover balcony that links to an expansive open-plan living area, creating an enviable indoor-outdoor lifestyle.

Home Features:

- Rare oversized living area of 72sqm.
- Open plan living and dining area with a dedicated in built study nook
- Galley style kitchen with gas cooking, plentiful of pantry space, and stone bench top

**Type** : Apartment  
**Price** : Guide: \$570,000  
**Building Size** : 86 sqm  
**View** : <https://www.denox.com.au/8689780>



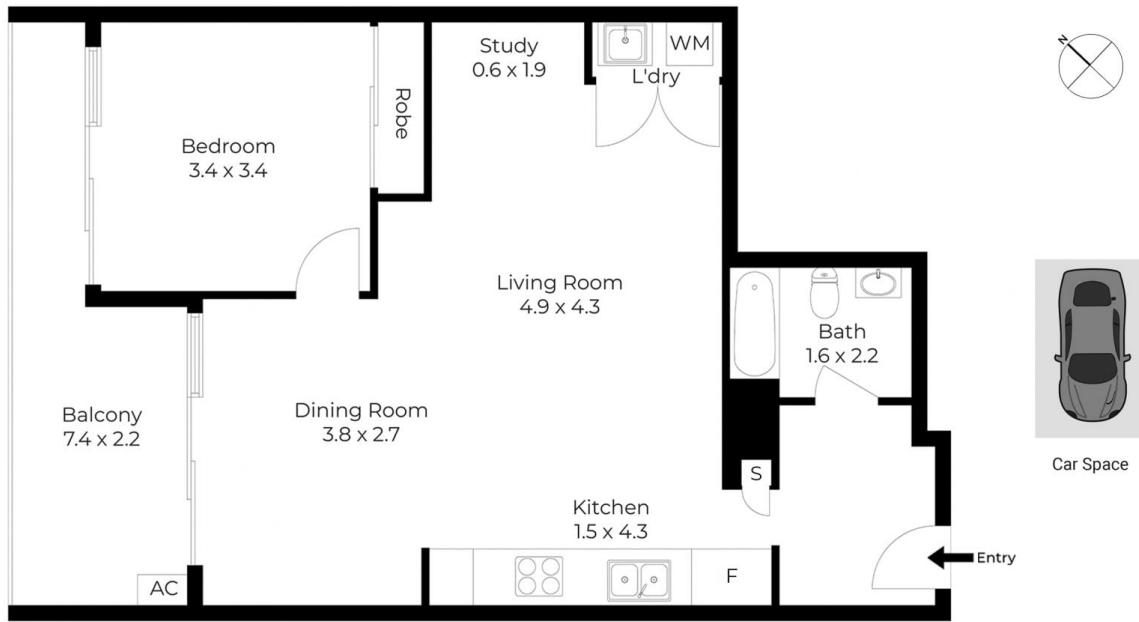
**Lijian (daniel) Ou Yang**  
02 9267 9071



**Joseph Cheng**  
02 9267 9071

[For full version visit the website](https://www.denox.com.au)

<https://www.denox.com.au>



## 3055/2D Porter St, Ryde

LIVING AREA: 72 SQM APPROX  
CAR SPACE AREA: 14 SQM APPROX  
TOTAL AREA: 86 SQM APPROX

INDICATIVE ONLY. THIS INFORMATION PRESENTED HERE IS SOURCED FROM WHAT WE CONSIDER RELIABLE SOURCES, WE CANNOT ASSURE ITS PRECISION. THOSE WITH INTEREST SHOULD CONDUCT THEIR OWN INVESTIGATIONS.