

DENOX



145A Bettington Road Oatlands NSW

5 🚗 4 🚗 4 🚗

William and Kevin are proud to present this substantial family estate at 145A Bettington Road, Oatlands, set on an impressive 1,292sqm parcel of land in one of the area's most tightly held pockets. Designed for large-scale family living and effortless entertaining, this expansive residence delivers multiple indoor and outdoor living zones, a resort-style pool setting, and exceptional flexibility for growing or multi-generational families.

Privately positioned and generously proportioned throughout, the home offers a rare combination of space, comfort, and lifestyle only moments from Parramatta CBD, Carlingford, elite schooling options, and transport connections.

Type : House
Price : Just Listed | Auction
Land Size : 1292 sqm
View : <https://www.denox.com.au/8687093>



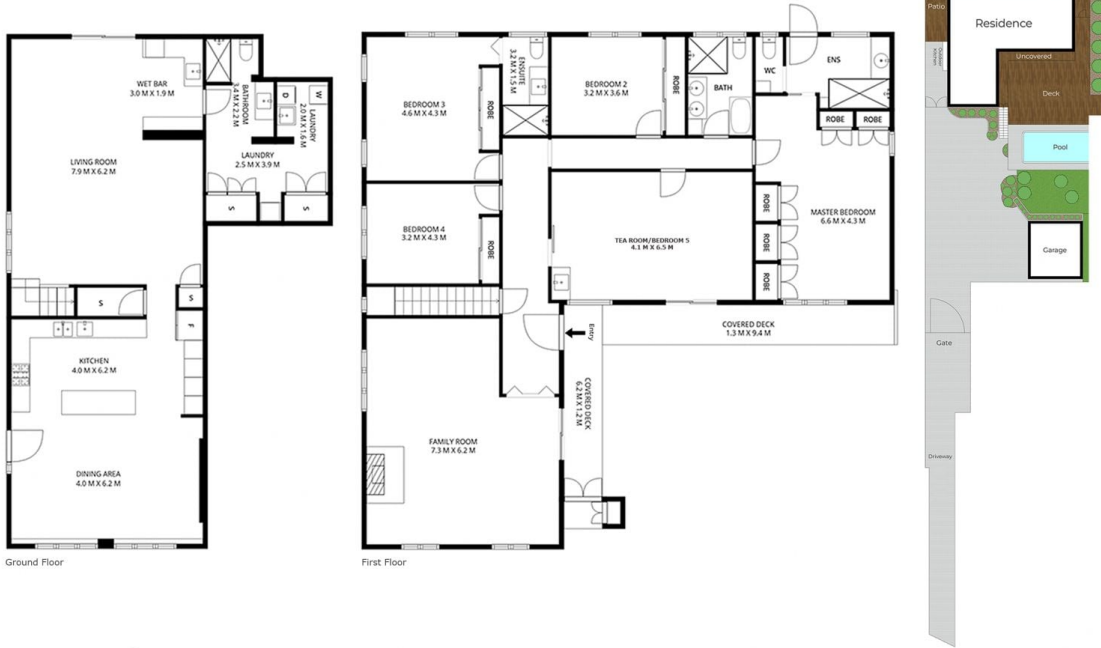
Guangqiu (william) Fan
02 9267 9071



Shaobo (kevin) Su
02 9267 9071

[For full version visit the website](https://www.denox.com.au)

<https://www.denox.com.au>



145A Bettington Rd, Oatlands

LAND AREA: 1292 SQM APPROX

INDICATIVE ONLY. THIS INFORMATION PRESENTED HERE IS SOURCED FROM WHAT WE CONSIDER RELIABLE SOURCES, WE CANNOT ASSURE ITS PRECISION. THOSE WITH INTEREST SHOULD CONDUCT THEIR OWN INVESTIGATIONS.