

# DENOX



32/2 Porter Street Ryde NSW

2 🛏 2 🚿 1 🚗

Daniel and Anita are proud to introduce this delightful north westerly aspect apartment perched up on Level 5. Brimming with natural light and sun, this is a perfect entry level and low maintenance home which has been recently renovated with new SPC hybrid timber floors and new paint. Enjoy easy access to Meadowbank station, Top Ryde Shopping Centre, Rhodes Waterside Shopping Centre, and park side amenities.

Home Features:

- Open plan living flowing onto a north westerly covered, sunny entertainers balcony
- Internally facing into internal courtyard providing open views and a tranquil environment
- Recently renovated with new SPC hybrid timber flooring

[For full version visit the website](https://www.denox.com.au)

**Type** : Apartment  
**Price** : TENANTED UNTIL JAN 2027 | CONTACT TO ENQUIRE  
**Building Size** : 85 sqm  
**View** : <https://www.denox.com.au/8492091>

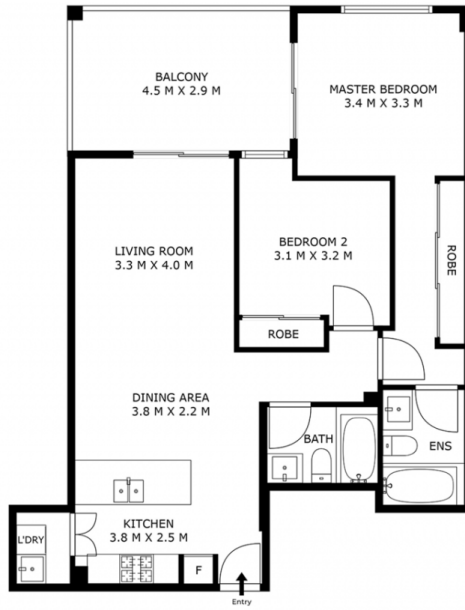


Lijian (daniel) Ou Yang  
02 9267 9071



Anita Thommesen  
02 9267 9071

<https://www.denox.com.au>



LEVEL 5



Car Space

## 32/2 Porter St, Ryde

LIVING AREA: 85 SQM APPROX  
TOTAL AREA: 100 SQM APPROX

INDICATIVE ONLY. THIS INFORMATION PRESENTED HERE IS SOURCED FROM WHAT WE CONSIDER RELIABLE SOURCES, WE CANNOT ASSURE ITS PRECISION. THOSE WITH INTEREST SHOULD CONDUCT THEIR OWN INVESTIGATIONS.