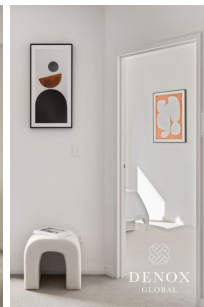


# DENOX



**A303/16 Constitution Road Ryde NSW**

1  1  1 

Daniel and Shabnam are proud to present this bright and spacious north-east facing 1 bedroom + MPR apartment positioned on level 3 of The Crewman building. Boasting an internal area of 72sqm, this apartment offers space and function like a 2 bedroom! The private outlook, sunny aspect, along with its standout heightened ceiling and large windows throughout the apartment creates a sense of openness and airiness. This apartment boasts a private and leafy outlook into the districts of Ryde, which can never be built out as it faces into low residential housing areas. Conveniently located to the Meadowbank train station and Meadowbank ferry wharf, water front park, cafes, gym, shopping and restaurants.

Home Features:

[For full version visit the website](https://www.denox.com.au)

**Type** : Apartment  
**Price** : \$ 650,000  
**Building Size** : 87 sqm  
**View** : <https://www.denox.com.au/8342156>

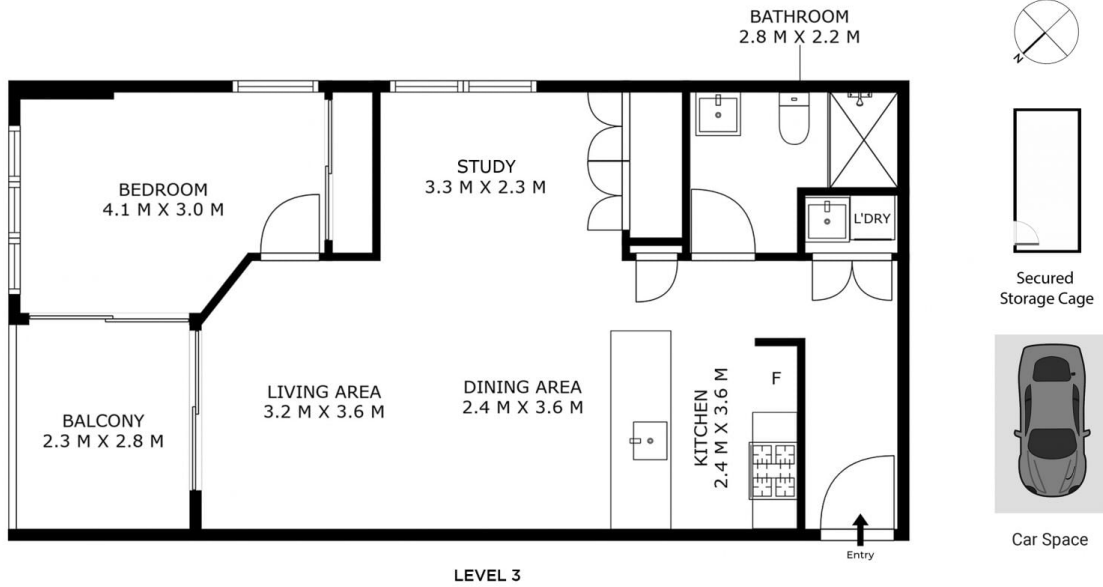


**Lijian (daniel) Ou Yang**  
02 9267 9071



**Shabnam Riyaz Chhatrisa**  
02 9267 9071

<https://www.denox.com.au>



## A5303/16 Constitution Rd, Ryde

INTERNAL AREA: 72 SQM APPROX  
TOTAL AREA: 87 SQM APPROX

INDICATIVE ONLY. THIS INFORMATION PRESENTED HERE IS SOURCED FROM WHAT WE CONSIDER RELIABLE SOURCES, WE CANNOT ASSURE ITS PRECISION. THOSE WITH INTEREST SHOULD CONDUCT THEIR OWN INVESTIGATIONS.