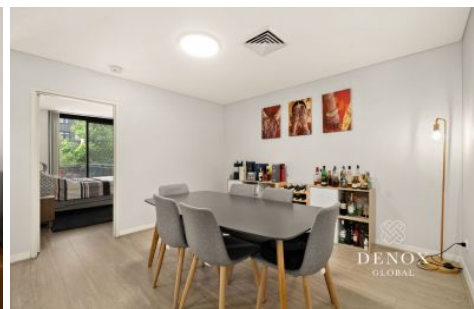


DENOX



4201/10 Porter Street Ryde NSW

2  2  1 

Presenting this elevated two-bedroom + study apartment of house-like proportions. Boasting a generous internal living space of over 100sqm with an open plan flowing out onto a large internal-facing alfresco terrace. Combining sleek and modern finishes, this stylish home offers effortless living and is perfect for the growing family, young professionals and downsizers.

Features include:

- Cross-over floorplan provides fresh and airy interiors
- Open-plan living and dining with timber floors flowing effortlessly to a partially covered entertainers balcony
- Large modern gourmet kitchen offers much needed counter space, stone bench top, gas cook top, pantry and

Type : Apartment

View : <https://www.denox.com.au/8318321>



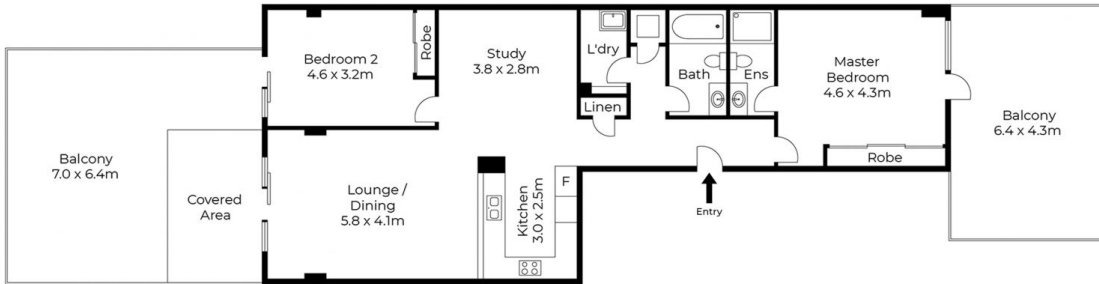
Zhengkun (peter) Kang
02 9267 9071

[For full version visit the website](https://www.denox.com.au)

<https://www.denox.com.au>



Secure
Car Space
5.5 x 2.5m



4201/10 Porter St, Ryde

INDICATIVE ONLY. THIS INFORMATION PRESENTED HERE IS SOURCED FROM WHAT WE CONSIDER RELIABLE SOURCES, WE CANNOT ASSURE ITS PRECISION. THOSE WITH INTEREST SHOULD CONDUCT THEIR OWN INVESTIGATIONS.