

# DENOX



**1002B/12 Nancarrow Avenue Ryde NSW**

**2**  **2**  **1** 

**ENTRANCE ON NANCARROW AVENUE**

Daniel and Anita are proud to present this luxurious 2 bedroom apartment positioned on the 10th floor of the 'Pearl of Bay' building here at Shepherds Bay. Enjoy the fresh and bright atmosphere, with the added luxury of floor-to-ceiling windows with views out to the leafy suburbs and the Sydney CBD. With cafes, shops, restaurants, and parks just a few steps away, it also close to Meadowbank Station, Wharf as well as bus stops leading to Sydney CBD. Ideal choice for a convenient and bay side lifestyle.

**Home Features:**

- Open plan living and dining area leading to a light filled balcony and additional storage in the living
- Modern kitchen with stone bench top, ample pantry

**Price** : \$ 842,500

**View** : <https://www.denox.com.au/7929144>



**Lijian (daniel) Ou Yang**  
**02 9267 9071**

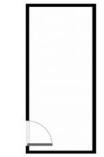


**Anita Thommesen**  
**02 9267 9071**

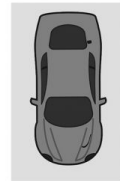
<https://www.denox.com.au>



LIVING AREA: 87 SQM APPROX  
ON TITLE AREA: 102 SQM APPROX



Secured  
Storage Cage



Car Space



## 1002B/12 Nancarrow Ave, Ryde

INDICATIVE ONLY. THIS INFORMATION PRESENTED HERE IS SOURCED FROM WHAT WE CONSIDER RELIABLE SOURCES, WE CANNOT ASSURE ITS PRECISION. THOSE WITH INTEREST SHOULD CONDUCT THEIR OWN INVESTIGATIONS.